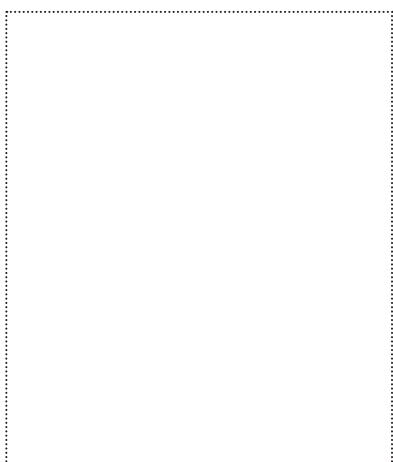


FIELD OF APPLICATION

- for window installation outside

ADVANTAGES

- „reversed-system“
- „fingerlift“
- 12 month UV-resistance
- resistance to air and wind-driven rain
- soft, flexible structure
- extremely good adhesion on all kinds of window frames and various substrates, e.g. concrete, OSB, wood, vapour barriers
- can be plastered over and painted over



ISO WINDOW UVAU ES

Window Tape one-sided provides a quick and reliable seal and vapour diffusion permeable seal for window connection joints.

The tape consists of highly UV-resistant backing that can be plastered over and painted over and is fully coated with a quality acrylic adhesive. ISO WINDOW UVAU ES Window Tape is ideal for window installation that is conform with RAL and ÖNORM B 5320.

AVAILABLE IN THE FOLLOWING SIZES

Width of roll	80 mm	100 mm
Length of roll	25 m	25 m
Liner split	20 / 60	20 / 80
Carton contents / rolls	4	4

PRODUKT DATA

Material	PP / PU compound
Working temperature	- 5 °C - + 40 °C
Temperature resistance	- 40 °C - + 80 °C (temporarily + 100°C)
UV resistance	12 months
Storage	12 months, cool and dry
Color	grey with black imprint
SD - value	0,19 m

10/2018_EN

ISOCELL

GUIDELINES FOR USE

ISOWINDOW UVAU ES

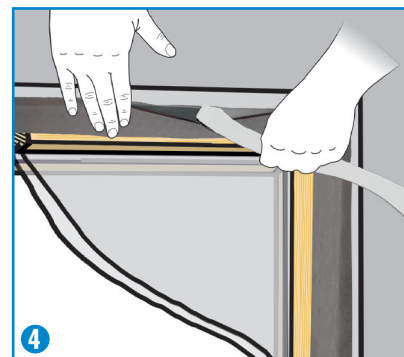
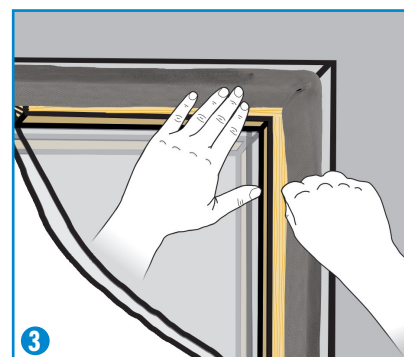
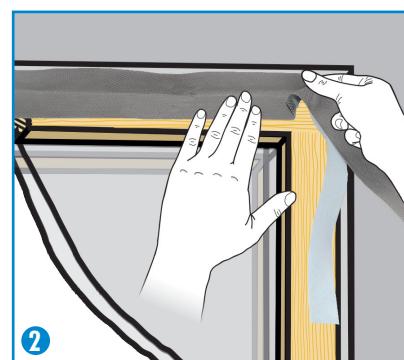
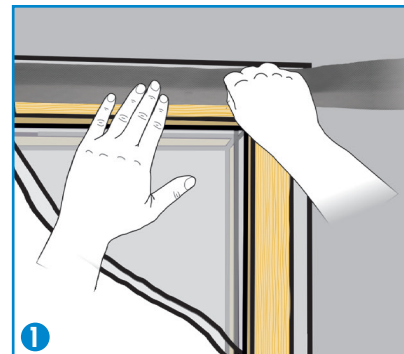
ISOWINDOW UVAU ES Window Tape is attached to the window frame after installation. The grey fleece side of the tape can be plastered over and painted over and must face outwards. The wide adhesive surface of the tape is attached to the wall, wood, OSB or vapour barrier. Attention must be paid that the substrate is dry and intact (if necessary treat the surfaces with BUBI LF Bonding Primer or UNI Primer).

(1)
Cut the window tape with approx. 12cm extra length. Pull the masking paper off the adhesive strip and press the adhesive tape carefully onto the window frame.

(2)
Make a fold or loop at the corners. To do so, press the window tape firmly to the window frame as far as the corner, then lift slightly, push the material along and turn 90°.

(3)
Now continue to press the window tape onto the window frame. The 'corner' fold seals the corners optimally. Do this at every corner

(4)
When the window tape is attached to the entire window frame and the joint insulated, pull off the wide masking paper and press onto the window frame.
The more pressure applied, the better the adhesion!



ISOCELL GmbH
Gewerbstraße 9
5202 NEUMARKT AM WALLERSEE | Österreich
Tel.: +43 6216 4108 | Fax: +43 6216 7979
office@isocell.at

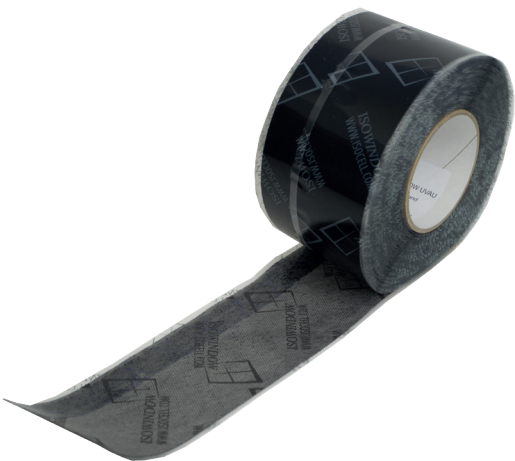
ISOCELL SCHWEIZ AG
Herbergstrasse 29
9524 ZUZWIL | Suisse /Schweiz
Tel.: +41 71 544 47 20
office@isocell.ch

ISOCELL FRANCE
170 Rue Jean Monnet | ZAC de Prat Pip Sud
29490 GUIPAVAS | France
Tél.: +33 2 98 42 11 00 | Fax: +33 2 98 42 11 99
contact@isocell-france.fr

ISOCELL BUREEL BELGIË
Außenborner Weg 1 | Schoppen
4770 AMEL | Belgique
Tel.: +32 80 39 90 58 | Fax: +32 80 39 97 68
office@isocell.be

ISOCELL Sverige AB
Gamla Stallet | Stora Wäsby
194 37 UPPLANDS VÄSBY | Sverige
Tel.: +46 10 130 25 01
office@isocell.se

ISOCELL
www.isocell.com

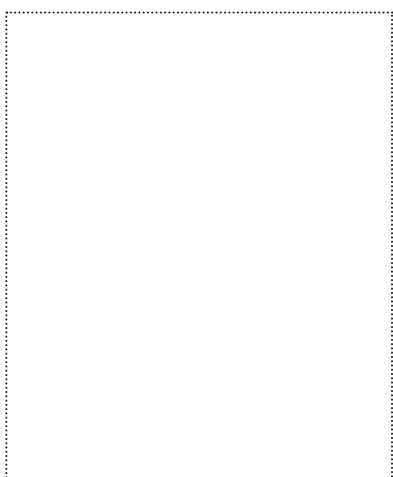


FIELD OF APPLICATION

- for window installation

ADVANTAGES

- „fingerlift“
- 12 month UV-resistance
- resistance to air and wind-driven rain
- soft, flexible structure
- extremely good adhesion on all kinds of window frames and various substrates, e.g. concrete, OSB, wood, vapour barriers
- Two-way adhesive coating for concealed installation
- Liner split
- can be plastered over and painted over



ISO WINDOW UVAU WS

The window tape two-way consists of a highly UV-resistant fleece backing that can be painted over and is coated with a heavy-duty adhesive. The back of the tape is completely adhesive and has separate liners. The adhesive strip covering the upper side can be attached directly onto the window frame without removing a liner, and the tape can therefore be totally concealed when installed. ISO WINDOW UVAU WS Window Tape is suitable for window installation conform to RAL and ÖNORM B 5320.

AVAILABLE IN THE FOLLOWING DIMENSIONS

Roll width	80 mm
Roll length	25 m
Backing strips	25 / 55
Rolls/carton	4

PRODUCT DATA

Material	flexible fleece, laminated air-tight
Working temperature	- 5 °C - + 40 °C
Temperature resistance	- 40 °C - + 80 °C (temporarily + 100°C)
UV stability	12 months
Storage	12 years; cool and dry
Colour	grey with black imprint
sd-value	0,19 m

02/2021_EN

ISOCELL

GUIDELINES FOR USE

ISOWINDOW UVAU WS

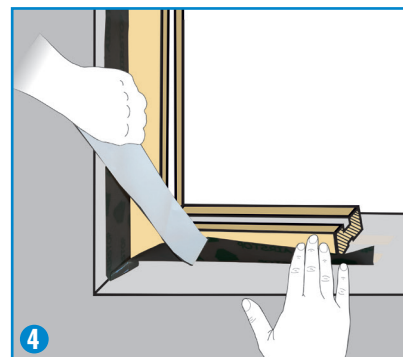
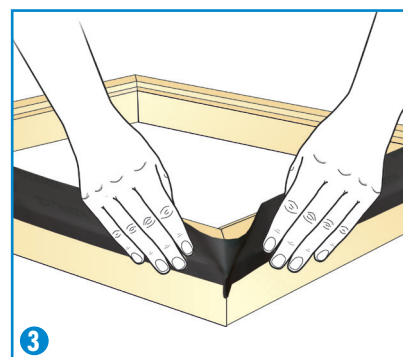
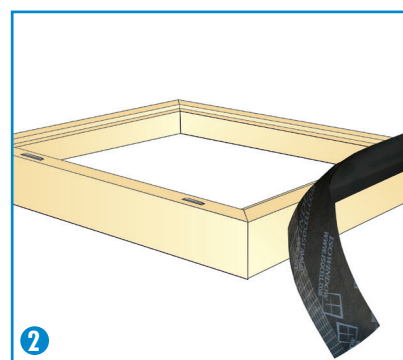
ISOWINDOW UVAU WS is fixed to the window reveal before the window is installed. The fleece side of the tape can be plastered over and painted over. The fully adhesive side is attached to masonry, wood, OSB or vapour barrier. The substrate should be sufficiently supporting (if necessary pre-treat surfaces with BUBI LF Primer or UNI Primer).

(1)
The fleece side of ISOWINDOW UVAU WS is coated with a narrow acrylic strip that is attached directly to the window frame without removing a liner. The fully adhesive back has a split liner.

(2)
Position the window frame with the outer side facing upwards. Carefully press the adhesive strip onto the window frame. Continue to roll out the ISOWINDOW UVAU WS and work as far as the corner.

(3)
A fold must be made at the corners. Do this by pressing the window tape firmly to the corner of the window frame and making a fold. The resulting corners serve as corner seals.

(4)
When the connection gap has been insulated, pull off the masking paper and press down the window tape. The more pressure used, the better the adhesion!



ISOCELL GmbH & Co KG
Gewerbstraße 9
5202 NEUMARKT AM WALLERSEE | Österreich
Tel.: +43 6216 4108 | Fax: +43 6216 7979
office@isocell.at

ISOCELL SCHWEIZ AG
Herbergstrasse 29
9524 ZUZWIL | Suisse /Schweiz
Tel.: +41 71 544 47 20
office@isocell.ch

ISOCELL FRANCE
170 Rue Jean Monnet | ZAC de Prat Pip Sud
29490 GUIPAVAS | France
Tel.: +33 2 98 42 11 00 | Fax: +33 2 98 42 11 99
contact@isocell-france.fr

ISOCELL BUREEL BELGIË
Außenborner Weg 1 | Schoppen
4770 AMEL | Belgique
Tel.: +32 80 39 90 58 | Fax: +32 80 39 97 68
office@isocell.be

ISOCELL Sverige AB
Box 20059
161 02 BROMMA | Sverige
Tel.: +46 10 130 25 00
info@isocell.se

ISOCELL
www.isocell.com