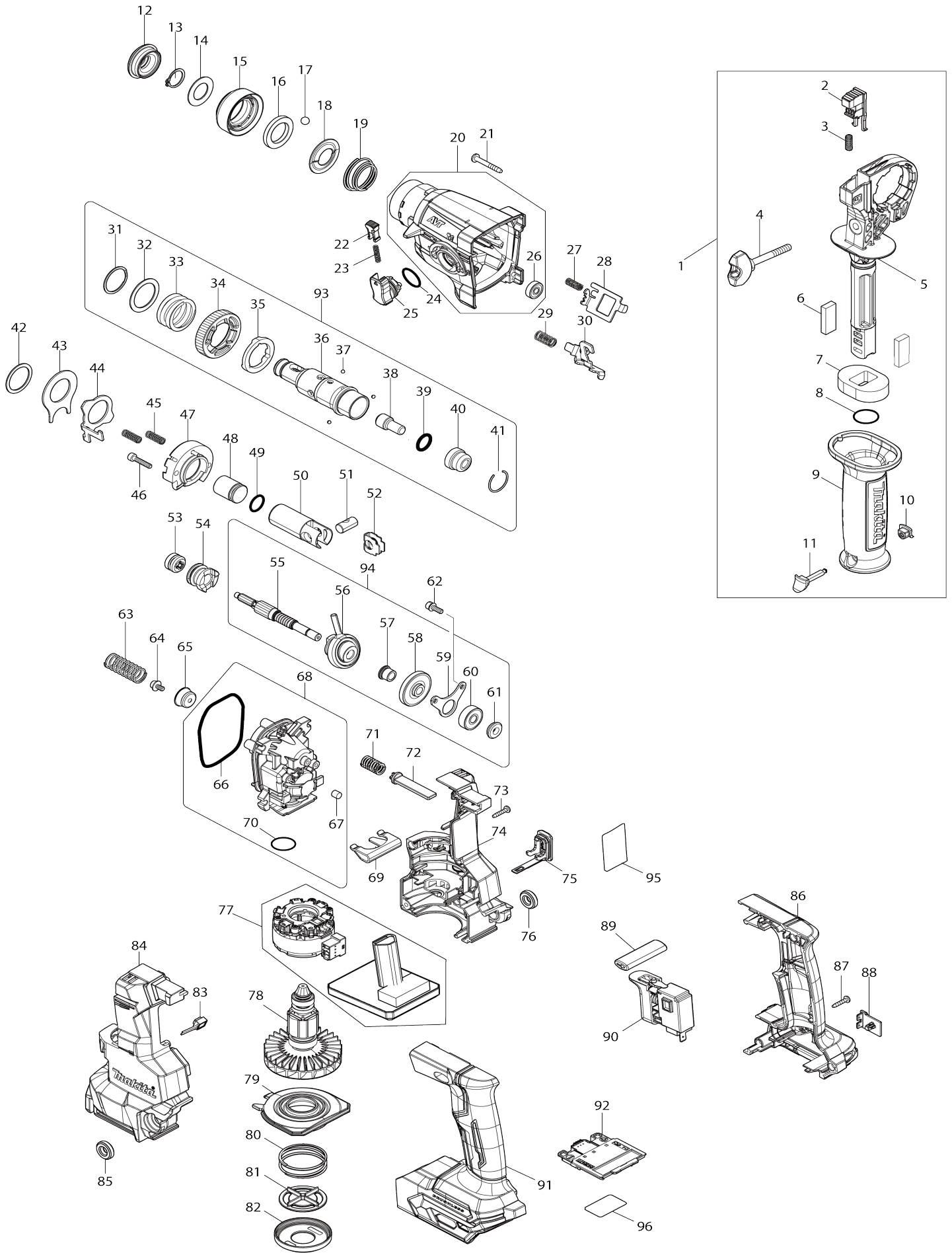


Model No.HR010G 20MM CRDLS COMBINATION HAMMER



Model No.HR010G 20MM CRDLS COMBINATION HAMMER

Item No.	Parts No.	Description	Interchangability	Q'ty	New/Old	Note1	Note2
001	122D63-1	GRIP ASSEMBLY		1			
D10		INC. 2-11					
002	413N19-8	LOCK BUTTON		1			
003	233360-7	COMPRESSION SPRING 4		1			
004	265625-9	THUMB SCREW M6X50		1			
005	413N18-0	SIDE HANDLE BASE		1			
006	422A20-4	SPONGE SHEET B		2			
007	422A19-9	SPONGE SHEET A		1			
008	213262-3	O RING 18		1			
009	413N20-3	GRIP 36		1			
010	422255-1	CAP		1			
011	162C55-2	FIX PIN		1			
012	286037-3	CAP 34		1			
013	961057-5	RETAINING RING S-17		1			
014	253377-4	FLAT WASHER 17		1			
015	458845-4	CHUCK COVER		1			
016	257416-2	RING 21		1			
017	216022-2	STEEL BALL 7.0		2			
018	346177-0	GUIDE WASHER		1			
019	232347-6	CONICAL COMP. SPRING 21-29		1			
020	136975-8	GEAR HOUSING ASS'Y		1			
D10		INC. 26					
021	266050-7	TAPPING SCREW 4X30		4			
022	458851-9	LOCK BUTTON		1			
023	234264-6	COMPRESSION SPRING 3		1			
024	213278-8	O RING 17		1			
025	162C16-2	CHANGE LEVER COMPLETE		1			
026	210035-5	BALL BEARING 625DDW		1			
027	232805-2	COMPRESSION SPRING 4		1			
028	347A82-0	LOCK PLATE		1			
029	232795-9	COMPRESSION SPRING 8		1			
030	347A83-8	CHANGE PLATE B		1			
031	347555-7	SPIRAL RETAINING RING 25		1			
032	267304-5	FLAT WASHER 25		1			
033	232360-4	COMPRESSION SPRING 25		1			
034	226854-9	SPUR GEAR 44		1			
035	327B07-6	DRIVING FLANGE		1			
036	326886-7	TOOL HOLDER		1			
037	216019-1	STEEL BALL 3		3			
038	326887-5	IMPACT BOLT		1			
039	213117-2	O RING 11		1			
040	327C61-6	CUP SLEEVE 9		1			
041	233942-5	RING SPRING 22		1			
042	267175-0	FLAT WASHER 24		1			
043	345681-6	JOINT PLATE		1			
044	347A81-2	CHANGE PLATE A		1			
045	232794-1	COMPRESSION SPRING 6		2			

046	922137-2	HEX. SOCKET HEAD BOLT M4X20	2		
047	141M98-7	INNER SUPPORT COMPLETE	1		
048	327215-7	STRIKER	1		
049	213832-8	O-RING 13	1		
050	327B06-8	PISTON CYLINDER	1		
051	324612-8	PISTON JOINT	1		
052	347A84-6	GUIDE PLATE	1		
053	227A97-2	SPUR GEAR 12	1		
054	327B05-0	CLUTCH CAM	1		
055	327B04-2	CAM SHAFT	1		
056	219032-8	SWASH BEARING 9	1		
057	257893-8	SLEEVE 7	1		
058	227A27-3	SPIRAL BEVEL GEAR 25	1		
059	347A79-9	BEARING RETAINER B	1		
060	210025-8	BALL BEARING 627LLB	1		
061	257897-0	RING 7	1		
062	266273-7	HEX. SOCKET HEAD BOLT M4X12	2		
063	232793-3	COMPRESSION SPRING 12	1		
064	266831-9	HEX SOCKET HEAD BOLT M4X8	1		
065	347A80-4	SPRING GUIDE	1		
066	213833-6	O-RING 60	1		
067	443138-2	FILTER	1		
068	136976-6	INNER HOUSING ASS'Y	1		
D10		INC. 66,67,70			
069	347A85-4	BEARING RETAINER	1		
070	213325-5	O RING 19	1		
071	232797-5	COMPRESSION SPRING 8	1		
072	413N16-4	PUSHER	1		
073	266130-9	TAPPING SCREW BIND PT 3X16	5		
074	183Y25-0	HOUSING SET	1		
D10		INC. 84			
075	140G30-2	CAP COMPLETE	1		
076	422A09-2	CUSHION RING 8	1		
077	629B82-1	STATOR COMPLETE	1		
078	619782-9	ROTOR	1		
C10	213134-2	O-RING 11	1		
079	413N13-0	AIR DUCT	1		
080	232796-7	COMPRESSION SPRING 37	1		
081	413N14-8	VALVE	1		
082	413N15-6	CAP	1		
083	620K85-2	LED CIRCUIT	1		
084	183Y25-0	HOUSING SET	1		
D10		INC. 74			
085	422A09-2	CUSHION RING 8	1		
086	183Y92-5	HANDLE SET	1		
C10	263005-3	RUBBER PIN 6	2		
C20	8007R2-2	XGT LOGO LABEL	1		
D10		INC. 91			
087	266130-9	TAPPING SCREW BIND PT 3X16	6		
088	422A08-4	CAP	1		
089	454980-6	F/R CHANGE LEVER	1		
090	651439-6	SWITCH C3JR-4B-2	1		

091	183Y92-5	HANDLE SET		1		
C10	263005-3	RUBBER PIN 6		2		
C20	8007R2-2	XGT LOGO LABEL		1		
D10		INC. 86				
092	632P65-6	TERMINAL UNIT		1		
093	136977-4	TOOL HOLDER ASS'Y		1		
D10		INC. 31-41				
094	136978-2	CAM SHAFT ASS'Y		1		
D10		INC. 55-61				
095	8589B0-0	HR010G NAME PLATE		1		
096	8589F2-4	HR010G SERIAL NO. LABEL		1		
A01	413N42-3	DEPTH GAUGE		1		
B01	199544-6	HAMMER SERVICE KIT		1		
C10	195127-0	OIL VESSEL SET		1		
D10		INC. 12,13,17,39,41,49				
F03	1911K0-5	TOOL HANGER SET		1		
F05	1911P5-0	DUST CASE SET		1		
F06	1911P8-4	DUSTCUP SET		1		
F24	1911P2-6	DX16DUST COLLECTION SYSTEM SET		1		

Please state Parts No. when your order.

Print Date 10/13/2023