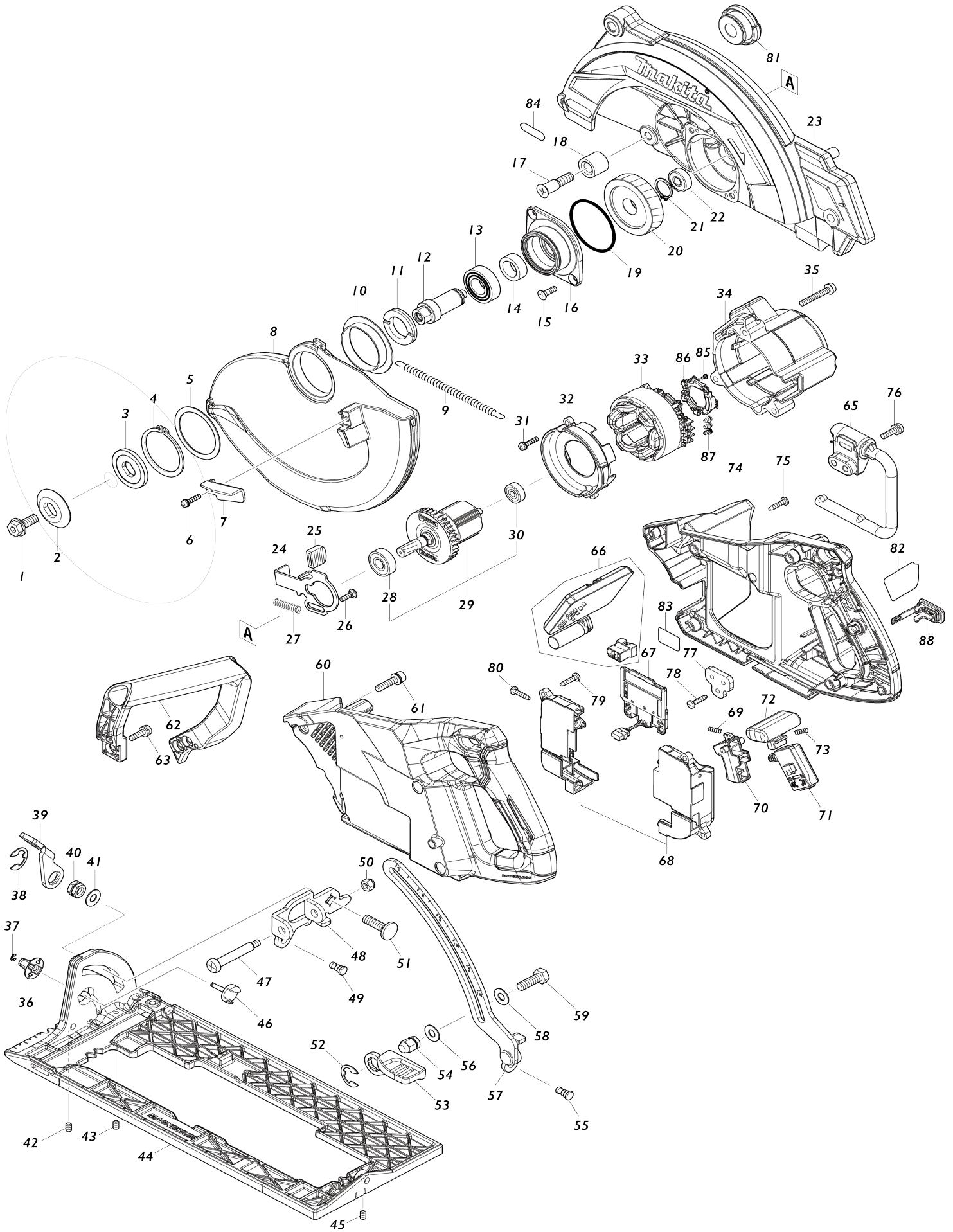


Model No.RS002G 260MM CORDLESS REAR HANDLE SAW



Model No.RS002G 260MM CORDLESS REAR HANDLE SAW

Item No.	Parts No.	Description	Interchangability	Q'ty	New/Old	Note1	Note2
001	266400-6	HEX. SOCKET HEX. BOLT M8X20		1			
002	224613-5	OUTER FLANGE 40		1			
003	224360-8	INNER FLANGE 40		1			
004	961202-2	RETAINING RING S-45		1			
005	267219-6	FLAT WASHER 45		1			
006	911531-3	P.H.SCREW M4X18 WITH WRM		1			
007	271467-1	LEVER 40		1			
008	312A93-4	SAFETY COVER		1			
009	232675-9	TENSION SPRING 7		1			
010	413356-6	SPACER		1			
011	285809-3	BEARING RETAINER 23-36		1			
012	326941-5	SPINDLE		1			
013	211251-2	BALL BEARING 6003LLB		1			
014	257024-9	RING 17		1			
015	265034-2	+ COUNTERSUNK HEAD SCREW M5X16		2			
016	312A94-2	BEARING BOX		1			
017	265B77-6	+COUNTERSUNK HEAD SCREW M8X35		1			
018	262200-2	RUBBER SLEEVE 10		1			
019	213676-6	O RING 53		1			
020	227873-8	HELICAL GEAR 57		1			
021	961057-5	RETAINING RING S-17		1			
022	210029-0	BALL BEARING 608ZZ		1			
023	140Y58-8	BLADE CASE COMPLETE		1			
C10	213434-0	O RING 26		1			
024	347168-4	SHAFT LOCK		1			
025	286039-9	CAP		1			
026	251529-1	+ PAN HEAD SCREW M4X14		1			
027	232381-6	COMPRESSION SPRING 6		1			
028	210059-1	BALL BEARING 6000DDW		1			
029	519667-8	ROTOR ASSY		1			
D10		INC. 28,30					
030	210022-4	BALL BEARING 626DDW		1			
031	911531-3	P.H.SCREW M4X18 WITH WRM		2			
032	413359-0	BAFFLE PLATE		1			
033	629A40-1	STATOR		1			
034	140Y63-5	MOTOR HOUSING COMPLETE		1			
C10	263002-9	RUBBER PIN 4		1			
035	911258-5	PAN HEAD SCREW M5X35		3			
036	457963-5	DIAL 22		1			
037	961017-7	STOP RING E-3		1			
038	257953-6	BOW STOP RING E-12		1			
039	271468-9	LEVER 56		1			
040	264006-4	HEX. NUT M8-13		1			
041	941201-0	FLAT WASHER 8		1			
042	266229-0	H.S.SET SCREW(CUP POINT)M5X8		1			
043	266229-0	H.S.SET SCREW(CUP POINT)M5X8		1			

044	312A92-6	BASE		1		
045	266229-0	H.S.SET SCREW(CUP POINT)M5X8		1		
046	327760-2	STOPPER PIN		1		
047	251221-9	+ PAN HEAD SCREW M6		1		
048	347169-2	ANGULAR GUIDE		1		
049	256511-5	SHOULDER PIN 6-7		1		
050	252014-7	HEX. LOCK NUT M6-10		1		
051	266227-4	CAP SQUARE NECK BOLT M8X28		1		
052	257953-6	BOW STOP RING E-12		1		
053	271433-8	LEVER 59		1		
054	252240-8	HEX. CAP NUT M8-13		1		
055	256511-5	SHOULDER PIN 6-7		1		
056	941201-0	FLAT WASHER 8		1		
057	162958-2	DEPTH GUIDE		1		
058	941201-0	FLAT WASHER 8		1		
059	251538-0	HEX. BOLT M8X24		1		
060	183S81-4	HANDLE SET		1		
C10	263005-3	RUBBER PIN 6		1		
D10		INC. 74				
061	922343-9	H.S.H.BOLT M6X25 WITH WR		4		
062	413355-8	GRIP		1		
063	911228-4	PAN HEAD SCREW M5X18		3		
065	127771-5	HOOK ASSEMBLY		1		
066	620E67-8	CONTROLLER		1		
067	632P65-6	TERMINAL UNIT		1		
068	183S18-1	TERMINAL BOX SET		1		
C10	263005-3	RUBBER PIN 6		2		
069	231433-0	COMPRESSION SPRING 4		1		
070	457432-6	SWITCH LEVER		1		
071	651083-9	SWITCH C3XA-1PSPM		1		
072	457431-8	LOCK OFF BUTTON		1		
073	231433-0	COMPRESSION SPRING 4		1		
074	183S81-4	HANDLE SET		1		
C10	263005-3	RUBBER PIN 6		1		
D10		INC. 60				
075	266326-2	TAPPING SCREW 4X18		8		
076	911228-4	PAN HEAD SCREW M5X18		2		
077	347805-0	LOCK PLATE		1		
078	266326-2	TAPPING SCREW 4X18		1		
079	266326-2	TAPPING SCREW 4X18		4		
080	266326-2	TAPPING SCREW 4X18		2		
081	286045-4	CAP 40		1		
082	858E57-3	RS002GNAME PLATE		1		
083	858E64-6	RS002GSERIAL NO. LABEL		1		
084	8012U4-2	XGT LOGO LABEL		1		
085	652093-9	PAN HEAD SCREW M2X5		3	*	
085-1	652119-7	PAN HEAD SCREW M2X6	O	3		
086	632R96-7	SENSOR UNIT		1		
087	652069-6	FLAT HEAD SCREW M3X6		3		
088	140G30-2	CAP COMPLETE		1		
C10	213218-6	O RING 16		1	*	
C11	213A05-9	O-RING16	O	1		

C20	818H48-4	CAP LABEL		1			
A01	E-07696	EFFICUT FOR WOOD CUTTING/ E N		1			
A02	782016-4	OFFSET WRENCH 13		1			
A03	140Y64-3	GRIP37 COMPLETE		1			

Please state Parts No. when your order.

Print Date 10/26/2023